

DID YOU KNOW?

about our...



**NEW
PRODUCT**

Lifting Point D Ring Pivot

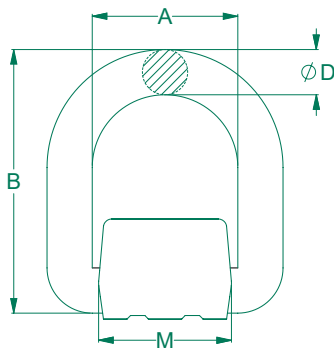
Weld on lift points add permanent anchor points onto spreader beams or heavy equipment.

LIFTING POINT D RING PIVOT GRADE 80 / POWDER COAT / HEC

Part	Qfind	WLL (Tonne)				Dimensions (mm)				Pack Qty
		0°	60°	90°	120°	A	B	Ø D	M	
ULLW08PDP01	LW08DP1	1.12	1.9	1.6	1.1	41	78.5	13.1	38.0	10
ULLW08PDP02	LW08DP2	2.00	3.5	2.8	2.0	42	88.0	14.0	40.0	10
ULLW08PDP03	LW08DP3	3.15	5.5	4.5	3.2	46	94.0	17.0	42.5	10
ULLW08PDP05	LW08DP5	5.30	9.2	7.5	5.3	55	118.0	22.0	61.0	5



Spring to maintain ring position



MARKINGS:

- **CE**
(European Conformity)
- **WLL**
(Working Load Limit)
- **Trace Code**
(Linked to certificate online)
- **Manufacturer's mark**
- **Size**



FEATURES

- Can be welded onto any carbon steel surface
- Lifting Point
- Fixed anchor point for spreader beam attachment
- Anchor point for load restraint
- Weldable strap with internal spring



You can download this Test Certificate and/or Report from our website:

hobson.com.au

Disclaimer: While every reasonable effort has been made to ensure that this document is correct at the time of printing, Hobson Engineering®, its agencies and employees, disclaim any and all liability to any person in respect of anything or the consequences of anything done or omitted to be done in reliance upon the whole or any part of this document.

Bolt Tension | Anti-Vibration | Product Reliability | Traceability

hobson.com.au **QUALITY FASTENERS SINCE 1935**

